

A complex network diagram with blue nodes and connecting lines, overlaid on a background of light blue hexagons.

ESON

ESON Precision Engineering Co.,Ltd



ESON-KY (5243)



Reporter : JC Chang



Agenda



Company Profile



Business Performance



Product Category



R&D , Technical



Automation



Q & A

Brief Status



- President : Yong Fu, Zheng
- Founder : Chia Hsiang, Tsai
- G.M : JC, Chang
- Capital : USD 55 Million
- Employee Amount : 6,000
- Main Product Range :
 - Design & Manufacture of mechanical parts.
 - Design & Manufacture precision tooling.
 - Stamping/Plastic injection molding / Surface treatment.
 - Automotive parts stamping / Injection with sub-assembly



Milestone

Growth :

- . Set Up factory in Mexico
- . Set Up New factory in Malaysia
- . listed in TW stock market
- . New Business for automotive parts

Developing :

- . Started Business for injection parts
- . Phase in Gamer ME parts
- . HH invested ESON
- . Server order from U.S customer
- . Foxconn join ESON

Standing :

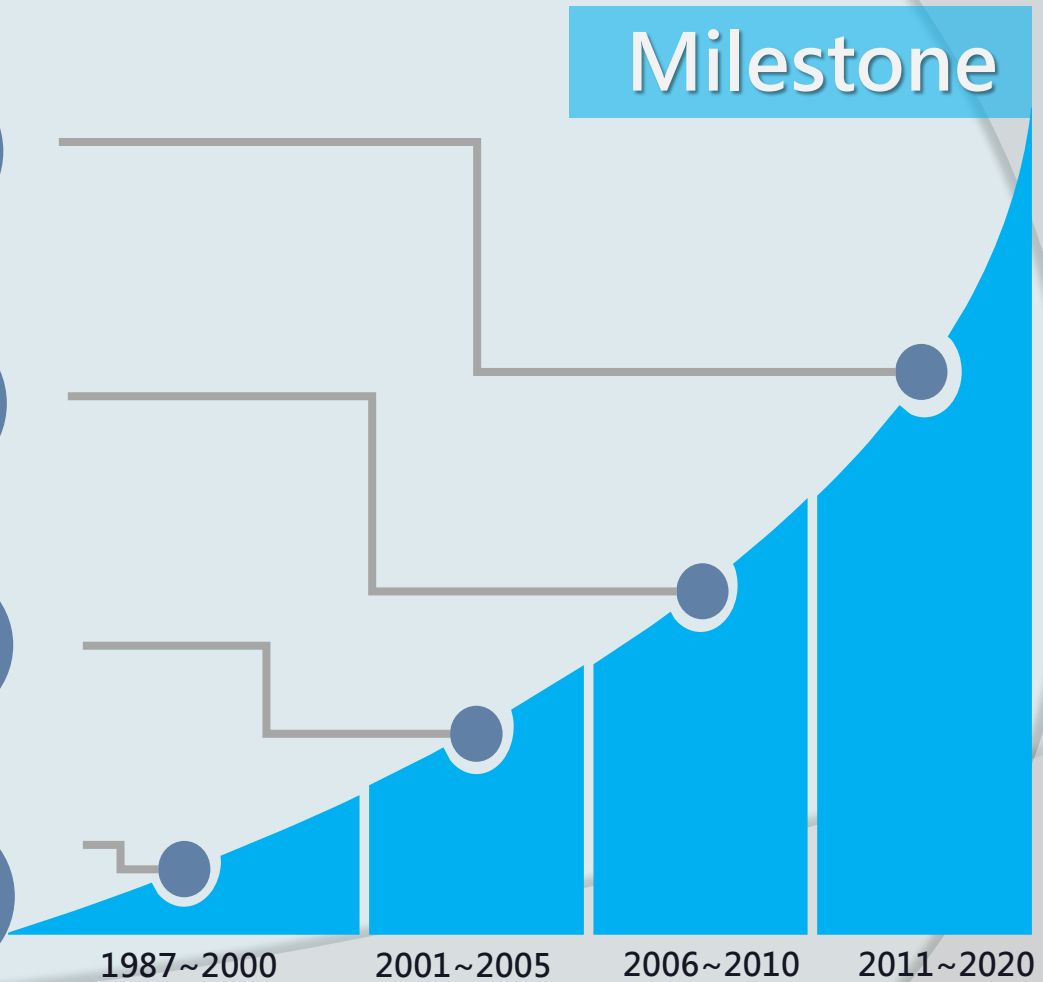
- . Set up Kunshan factory
- . New Business for automotive tooling

Founding :

- . Founded tooling Plant in Taipei
- . New Business with Japanese Brand



Milestone





ESON Group Family Geography








放眼全世界
ESON Family Geography

Business Performance

| ESON | FY 2016 | | FY 2017 | | FY 2018 | | FY 2018 Q1 | | FY 2019 Q1 | |
|------------------|-----------|-------|-----------|-------|-----------|-------|------------|-------|------------|-------|
| | NTD(100M) | % | NTD(100M) | % | NTD(100M) | % | NTD(100M) | % | NTD(100M) | % |
| Capital fund | 17.35 | | 17.35 | | 17.35 | | 17.35 | | 16.85 | |
| Net sales | 108.62 | | 108.77 | | 102.99 | | 21.84 | | 23.75 | |
| Cost of sales | 94.34 | | 92.04 | | 88.52 | | 18.34 | | 19.83 | |
| Gross profit | 14.28 | 13.1% | 16.73 | 15.4% | 14.47 | 14.0% | 3.50 | 16.0% | 3.92 | 16.5% |
| Selling expenses | 10.44 | 9.6% | 11.03 | 10.1% | 10.21 | 9.9% | 2.39 | 10.9% | 2.60 | 10.9% |
| Operating profit | 3.84 | 3.5% | 5.70 | 5.3% | 4.26 | 4.1% | 1.11 | 5.1% | 1.32 | 5.6% |
| PBT | 4.37 | 4.0% | 4.90 | 4.5% | 4.87 | 4.7% | 0.86 | 3.9% | 1.21 | 5.1% |
| Income tax | 0.79 | 0.7% | 0.58 | 0.5% | 1.12 | 1.1% | 0.21 | 0.9% | 0.14 | 0.6% |
| Net income | 3.58 | 3.3% | 4.32 | 4.0% | 3.75 | 3.6% | 0.65 | 3.0% | 1.07 | 4.5% |
| EPS | 2.18 | | 2.50 | | 2.14 | | 0.38 | | 0.63 | |

Product Distribution



| Products | TV | Tools | Server | Auto | 3C |
|---|--|---|---|---|-------|
|  |  |  |  |  | |
| 2016 Rev. % | 70.97% | 6.62% | 6.11% | 4.18% | 9.99% |
| 2017 Rev. % | 62.97% | 12.67% | 9.65% | 8.29% | 4.52% |
| 2018 Rev. % | 50.69% | 11.26% | 13.95% | 20.66% | 2.34% |
| 2019 Q1 Rev. % | 53.01% | 12.11% | 6.56% | 26.33% | 1.41% |

Product Milestone

1987

Product Milestone



- Metal product tools
- Home appliance tools export
- Automotive tools export

Tooling

2001



- Notebook/ PC
- Game console
- Network server
- TV mechanical component

Consumer

2010



- Anodizing
- Laser embedding
- Diamond cutting
- High-Gloss UV painting
- Evaporation/deposition
- Water transfer print/ heat transfer print

Surface Treatment

2018



- Auto parts stamping/ injection
- Light weight mechanical parts
- Cloud server
- IPC server

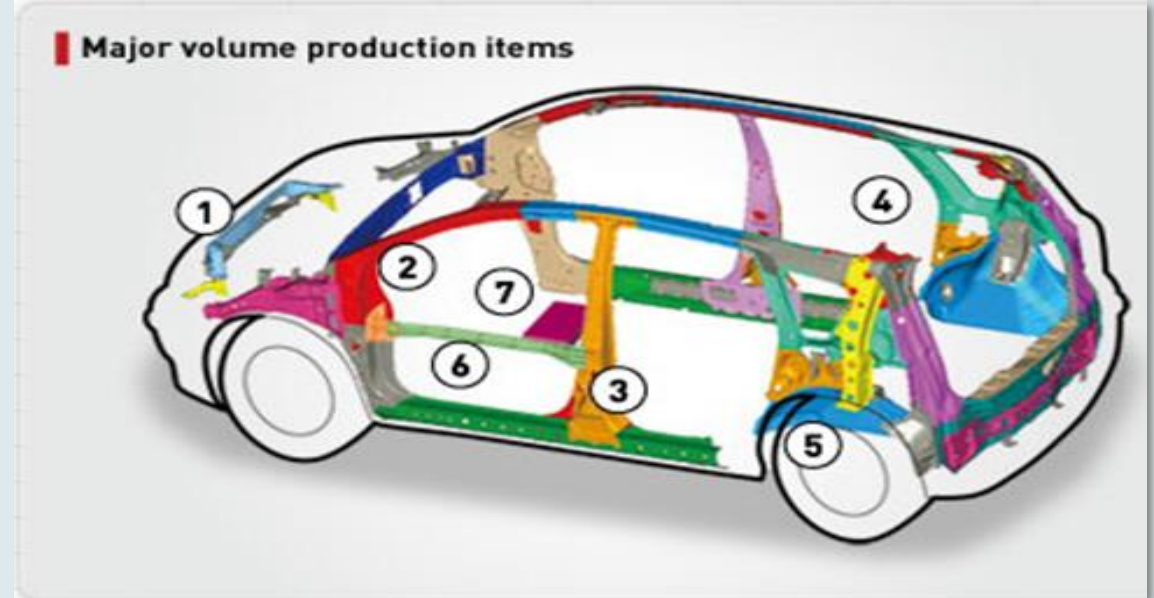
Automotive



Tooling Product

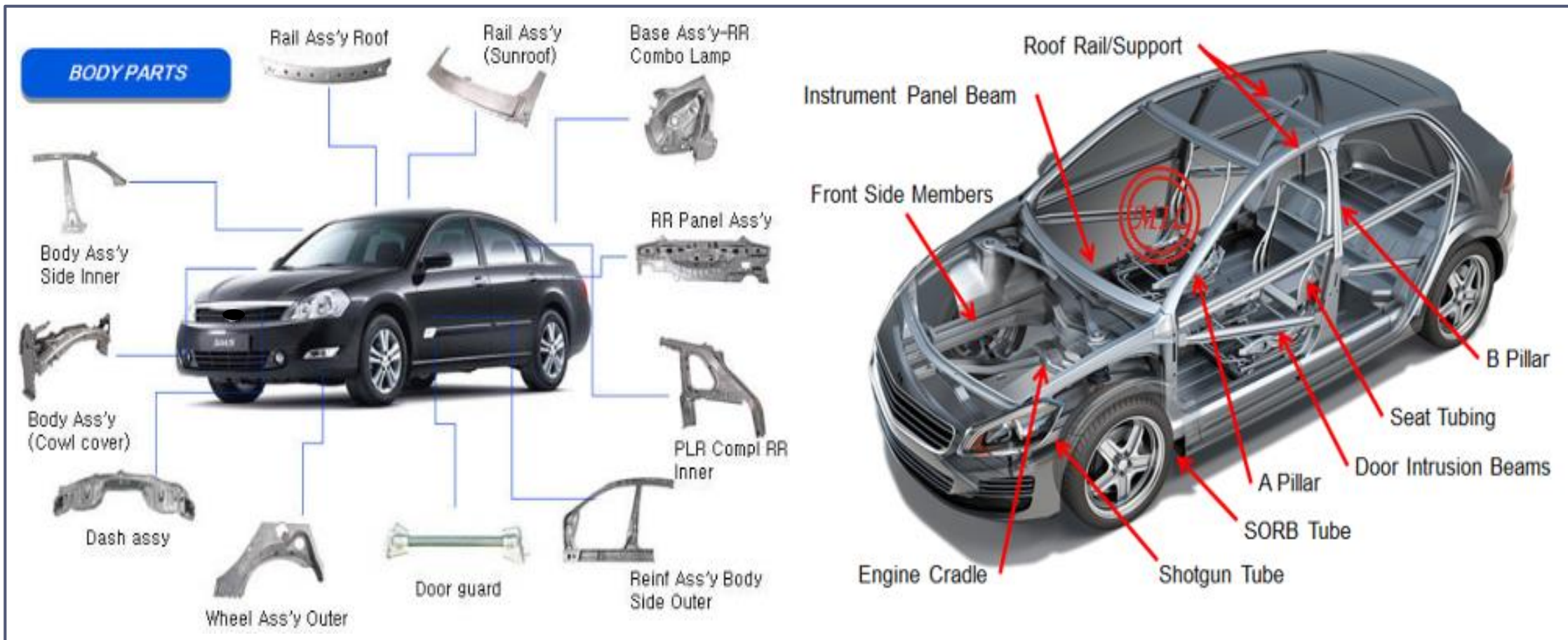
- With experience and parts tooling design

| Automotive components | Product |
|-----------------------|---|
| Structural Components | Chassis, Support of Radiator, Pillar, Door Beam, Wheel Housing...,etc |
| Interior Parts | Dashboard, Light, Handle...,etc |
| Body Parts | Hood |



Body Parts

Inner Structure Parts





Cloud Server





Consumer Product



Approx
0.2 in





Tool Capability

Tool Design Capacity

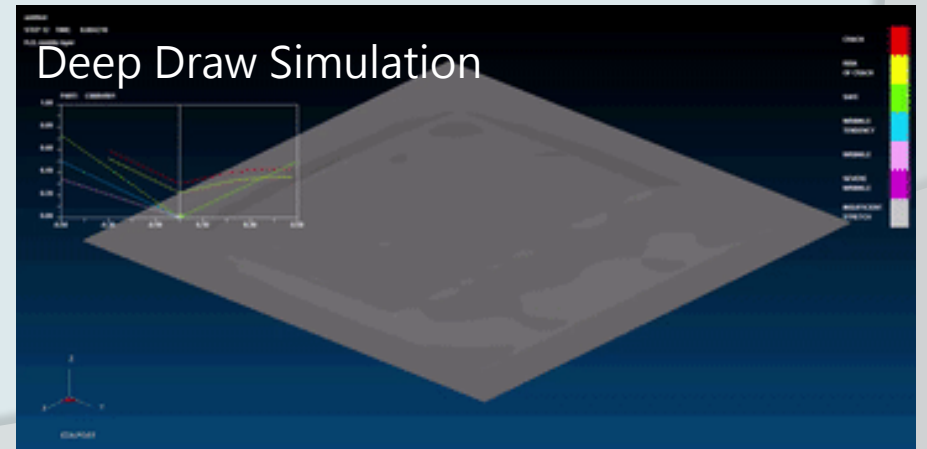
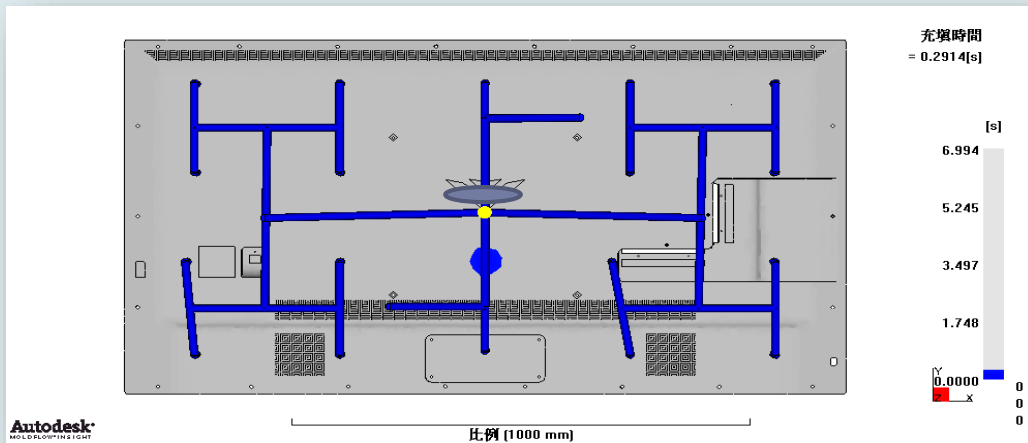
- CAD Software * UG Pro-E , Auto-CAD
CATIA
- Simulation * DYNAFORM , Moldflow
- NC CAM * UG Master-CAM

Tooling Manpower * 350

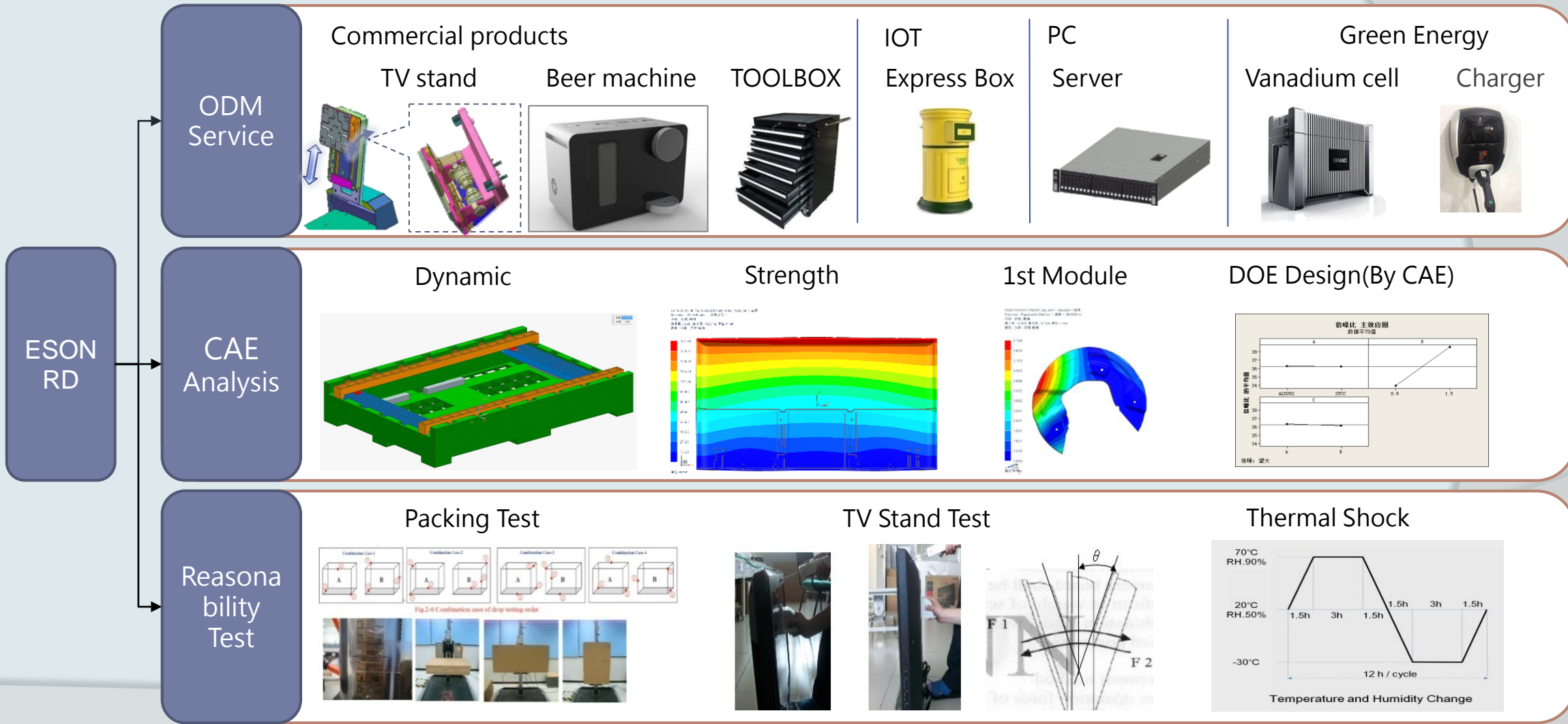
- Designer * 60
- Engineer * 15
- Programmer * 30
- Machine Operator * 130
- Toolmaker * 115

| Main Equipment List | Q' ty (PCS) |
|---------------------|-------------|
| CNC | 33 |
| Wire Cut Machine | 37 |
| EDM | 7 |
| Grinding Machine | 27 |
| Drilling Machine | 23 |

Mold Flow Simulation



Technical capability Development



Commercial products

TV stand

Beer machine

TOOLBOX

IOT

Express Box

PC

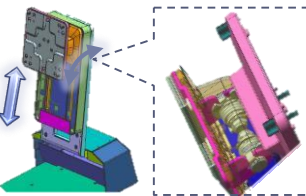
Server

Green Energy

Vanadium cell

Charger

ODM Service



ESON RD

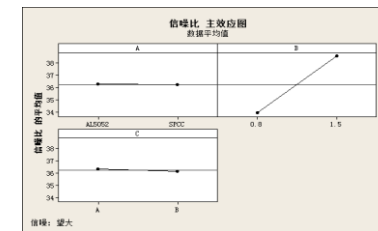
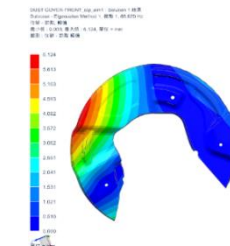
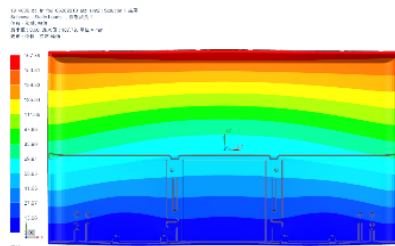
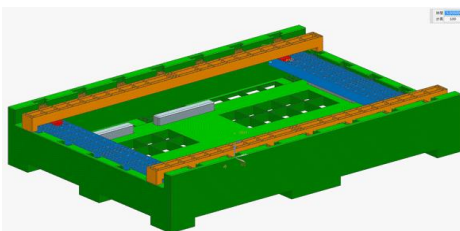
CAE Analysis

Dynamic

Strength

1st Module

DOE Design (By CAE)



Packing Test

TV Stand Test

Thermal Shock

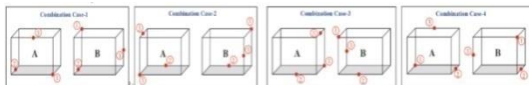
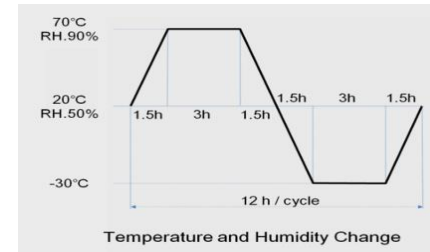
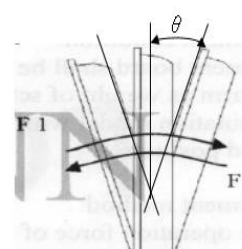
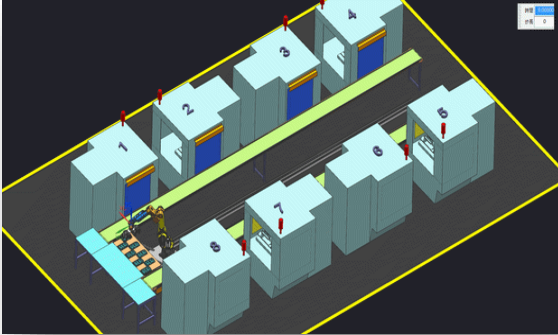


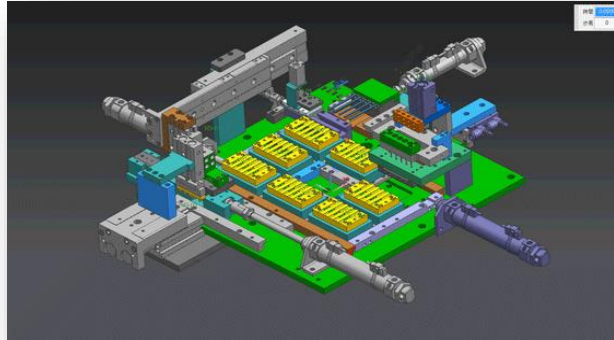
Fig 2-6 Combination case of drop testing order



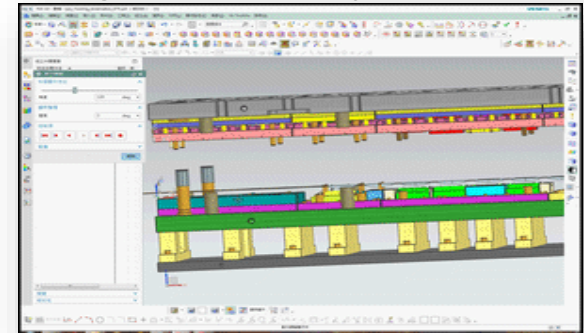
Automation evaluation



Automation Jig design



Prog. Die Line Analysis



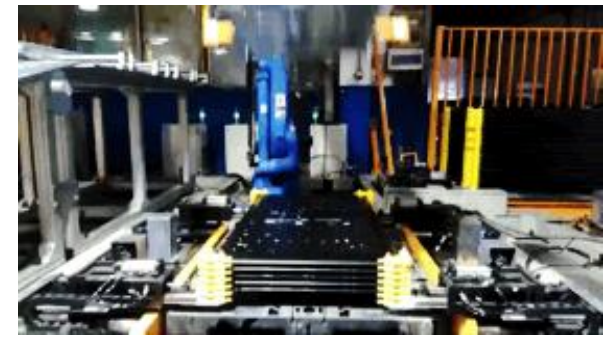
Automation Screw



Product CCD inspection



Automation Stack





ESON

Thank You



ESON Precision Engineering Co., Ltd.

<http://www.eson.com.cn>



ESON-KY (5243)